

Extra-Curricular Activities

In Scoil Bhríde your child will have the opportunity to participate in many extra-curricular activities. All activities are undertaken under the supervision of members of our teaching staff. The following gives an insight into the broad range of activities we offer:

Cultural activities:

- ◆ Celebration of Seachtain na Gaeilge
- ◆ Preparation for and participation in Fleadh Ceoil activities
- ◆ Fancy Dress
- ◆ Annual Trip to Christmas Pantomime
- ◆ Annual visits from storytellers, poets, artists
- ◆ Language Classes

Music and Dance:

- ◆ School Choir
- ◆ School Band
- ◆ Dance classes

Sport:

- ◆ Football
- ◆ Chess
- ◆ Soccer
- ◆ Hurling
- ◆ Tag Rugby
- ◆ Basketball
- ◆ Athletics

Community Activities

- ◆ Grandparents' Day
- ◆ Friendship Week
- ◆ Operation Christmas Child
- ◆ Visit of Santa Claus
- ◆ Carol Singing in shopping centre
- ◆ Carol Service in St. Mary's Church
- ◆ National Spring Clean Week
- ◆ Visit to Edenderry Library
- ◆ Visit to Edenderry Fire Station
- ◆ Inter-Cultural Celebration Day
- ◆ Charity Fundraising



Helping you and your child transition to Primary School

To support and assist parents of children commencing school, we organise an **Introductory Meeting** in mid-May. The meeting briefs parents on preparing their children for primary school while the children visit their classroom. The meeting outlines the schools' procedures, policies and Code of Behaviour. This provides all parents with an opportunity to seek information and clarify any outstanding issues/concerns they may have. Both parents and pupils are taken on a tour of the school.

A follow-up meeting with the parents of Junior Infant children is held during the first term to assist parents in supporting their children with their school work. An Annual Calendar with all known holidays, events and activities is issued to parents at the beginning of the school year to allow them to plan ahead for school closures.

In addition, the school operates:

- ◆ Book rental schemes
- ◆ Free School Library from which pupils can borrow books

Scoil Bhríde's Parents' Association

Scoil Bhríde Primary School is very fortunate to have an active and supportive Parents' Association. The Association is the structure through which parents/guardians in a school can work together for the best possible education for their children. The Parents' Association works with the Principal, staff and the Board of Management to build effective partnership between home and school. Scoil Bhríde's Parents' Association has a direct input to the school's policies and procedures through its representatives on the school's Board of Management.

The Parents' Association plays an important part in the life of our school and supports the school in every way. The Association is a support for parents in our school and all parents of children attending the school can join the Association.

Junior Infant Yard



We look forward to working closely with you as a parent/guardian and in the interest of ensuring your child has a happy, fulfilling and successful educational experience during their primary years.

Scoil Bhríde Primary School

Killane, Edenderry, Co. Offaly.



Enrolment for September 2021/22 School Year

14th January —4th February 2021

Parents' Information Booklet

Phone No: 046 9773451

E-mail: info@scoilbhrideps.com

or enrolment@scoilbhrideps.com

www.scoilbhrideps.com

Follow us on Twitter @scoilbhrideps1



Scoil Bhríde Primary School

We understand that selecting a school for your child's primary education is a very important decision. It is important that you acquire all the information you need to make an informed choice. To help you evaluate our school, we have put together this Information Booklet to give you some information about our school. Please contact us by email on info@scoilbhrideps.com or enrolment@scoilbhrideps.com should you have any queries. You can also phone 0469773451. We will be happy to assist you in whatever way we can. We very much appreciate you considering Scoil Bhríde Primary School for your child's primary education and look forward to providing any additional information you may require, over the coming days and weeks.

Our School

Scoil Bhríde Primary School is located in Killane, Edenderry. Our school was established in 2007 and is a mainstream co-educational primary school with 6 special classes for children with Autistic Spectrum Disorders.

Building of our new school was completed in February 2015. Our new building offers children a state of the art learning environment with modern facilities, technologies and equipment. It has 30 bright and welcoming classrooms, a PE hall, 2 libraries, modern computing and ICT facilities, occupational therapy room, speech and language room, relaxation and sensory rooms and a demonstration kitchen. The school has three ball courts, separate playgrounds for junior and senior pupils, bicycle shelters, playing pitches and landscaped gardens.

The move to our new school was a very exciting time for us and the excitement continues as our facilities and school community continues to grow and develop.



Our School Community

While we cater for children from the town of Edenderry and its surrounding hinterland, our pupils are very much part of the wider, national and international community. Many children from different ethnic and cultural backgrounds attend Scoil Bhríde linking us to countries across Europe and the 5 continents of the world.

Our school has a Catholic ethos and welcomes pupils of all religions and none. Our school community is encouraged to be particularly sensitive to those who have special educational needs, come from different cultural, ethnic and/or religious backgrounds and who may have different life experiences.

Our Educational Philosophy

Our educational philosophy promotes equality and we believe children benefit most from an inclusive educational experience at primary level, therefore boys and girls are educated side by side in all our classrooms from Junior Infants to Sixth Class.

Curricular Subjects Taught

In our school each child is treated as an individual and our staff, teachers and SNAs, work diligently to meet the individual learning needs of each pupil in their care. Staff are highly qualified, motivated and dedicated to ensuring each child has a happy, enjoyable and successful learning experience in school.

Curricular subjects taught are:

- ◆ Languages: English and Irish
- ◆ Mathematics
- ◆ Social, Environmental and Scientific Education: History, Geography, Science
- ◆ Social, Personal and Health Education
- ◆ Arts: Visual Art, Music and Drama
- ◆ Physical Education

In addition, catholic children receive instruction in Religious Education. Pupils not participating in our catholic programme are engaged with other activities during this period. The school uses multiple resources in teaching the children. Interactive whiteboards are used in every class and pupils do not rely solely on individual text books and/or workbooks.

Our particular strength is in experiential learning. This means emphasis is placed on active exploration and investigation, on collaborative and co-operative work and on developing skills and reasoning. To this end children are given opportunities to visit local areas of interest, to engage with field trips, visits to national monuments and places of interest and have opportunities to attend the theatre, art galleries, concert halls etc during their time with us.



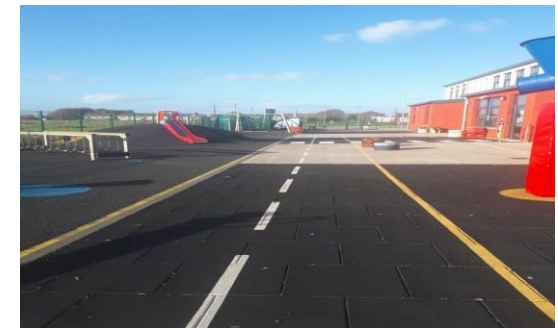
International Projects

We like to participate, when possible, in International Projects, this allows our pupils to link with students in other countries, to learn about their lifestyles, customs and cultures. To date we have linked with schools in England, Poland, Spain, Greece and Cyprus.



Monitoring Standards and Achievements

We place emphasis on ensuring children achieve to the best of their ability. Children's progress is continually assessed and standardized tests are administered throughout the year to pupils from senior infants to sixth class to ensure progress is being monitored and high standards are continuously being achieved. Parents are informed in line with the NCCA Guidelines.



Anti-Bullying

Bullying is a repeated behavior which makes one uncomfortable; this may be physical, verbal or psychological. Bullying behaviour is ***not acceptable*** in Scoil Bhríde and is taken very seriously. Children through our Anti-Bullying Programme are encouraged to tell an adult or peer if they are being upset by anyone. The school engages parents with the Programme.